

WAVATION
BY DESIGN



SEATONVILLE



FREEHOLD
TOWNHOMES



INNOVATION BY DESIGN[®]



SEATONVILLE

Welcome to a visionary new master-planned community that will forever change the eastern GTA landscape and live on as a true landmark for convenient connected family living.

OFFERING A WIDE SELECTION OF FREEHOLD TOWNHOME SIZES AND STYLES TO CHOOSE FROM INCLUDING THE PERFECT BALANCE OF CONTEMPORARY AND TRADITIONAL.

ARISTA STYLE & OPTIONS

A great measure of the **Seatonville** community's richness comes from the sheer number of choices that the **ARISTA "A" TEAM** offers its purchasers.

At **Seatonville**, you will find an outstanding choice of newly-designed Freehold Townhomes offering modern architecture and floorplan layouts that have been designed with today's discerning buyer in mind. Choose from a stunning array of available floorplans, with interiors that are richly appointed, offering you even more options and design opportunities.

"Our homes offer an incredible selection of features, finishes, colours and textures from which to choose. So take your time – review them all at your leisure, and make choices that will help you personalize your home in its every detail."



AN UPSCALE COMMUNITY OF TIMELESS HOME DESIGNS

At **Seatonville**, every day is a celebration. In this upscale community, **ARISTA'S** Freehold Townhomes are nestled amongst timeless, detached home designs within an amazing new home community where children play, families stroll and the neighbourhood comes alive.



20' TRADITIONAL FREEHOLD TOWNS

Timeless tradition defines this classic collection of Townhomes. Elegant architectural details include clay brick and stone accents, enhanced with **ARISTA'S** signature exterior finishes.



20' CONTEMPORARY FREEHOLD TOWNS

With its striking modern exterior, this collection of Townhomes features artful design elements in brick, stone and metal, and is finished with **ARISTA'S** meticulous attention to detail.



COUNTRY & CONVENIENCE all in the same great place

EDUCATION

- 1 St. Wilfrid Catholic School
- 2 École Ronald-Marion
- 3 Valley Farm Public School
- 4 Pine Ridge Secondary School
- 5 Alexander Graham Bell Public School
- 6 St. Patrick Catholic Elementary School
- 7 Lincoln Alexander Public School
- 8 St. André Bessette Catholic School
- 9 Nottingham Public School
- 10 St. Teresa of Calcutta Catholic School
- 11 St. Catherine of Siena Catholic School

- 12 Terry Fox Public School
- 13 Dr. Roberta Bondar Public School
- 14 Applecroft Public School
- 15 Westney Heights Public School

SHOPPING CENTRES

- Nottingham Market
- SmartCentres Pickering
- Pickering Town Centre
- Harwood Centre
- Durham Centre

CONSERVATION AREAS

- Claremont Nature Centre
- Greenwood Conservation Area
- Heber Down Conservation Area

PARKS

- Bob Huner Memorial Park
- Grand Valley Park
- Valley Farm Ravine
- Beverley Morgan Park
- Rotary Frenchman's Bay West Park
- Bay Ridges Kinsmen Park
- Rotary Park
- Ajax Waterfront Park
- Lakeside Park
- Gordon Richards Park
- Ronald C. Deeth Park

RECREATION CENTRE/ARENA

- Jurassic Park East
- The Hoop Factory
- Don Beer Arena
- McLean Community Centre
- Ajax Community Centre
- Ajax Turf Fields
- Whitby Iroquois Soccer Dome
- Iroquois Park Sports Centre
- McKinney Skatepark
- McKinney Centre

NATURE TRAILS

- Whitevale & Seaton Hiking Trail Loop
- Seaton Trail
- Duffins Trail
- Cedar Trail
- Orchard Trail
- Vista Trail
- Mast Trail
- Frenchman's Bay Watfront Trail

SERVICES

- 1 Pickering City Hall
- 2 Pickering Public Library
- 3 Service Ontario
- 4 Service Canada



TRADITIONAL FREEHOLD TOWNHOMES



SEATONVILLE
URBAN VILLAGE LIVING

20'
FREEHOLD
TOWNS



ALDERWOOD
END-A

ROSEBANK
A-REV

FORESTBROOK
A

MAPLERIDGE
A-REV

FORESTBROOK
A

ROSEBANK
A-REV

ALDERWOOD
END A-REV

Artist's concept.

Elevation **A**





CONTEMPORARY FREEHOLD TOWNHOMES



SEATONVILLE
URBAN VILLAGE LIVING

20'
FREEHOLD
TOWNS



Artist's concept.

Elevation **B**



20'
FREEHOLD
TOWNS



THE MAPLERIDGE

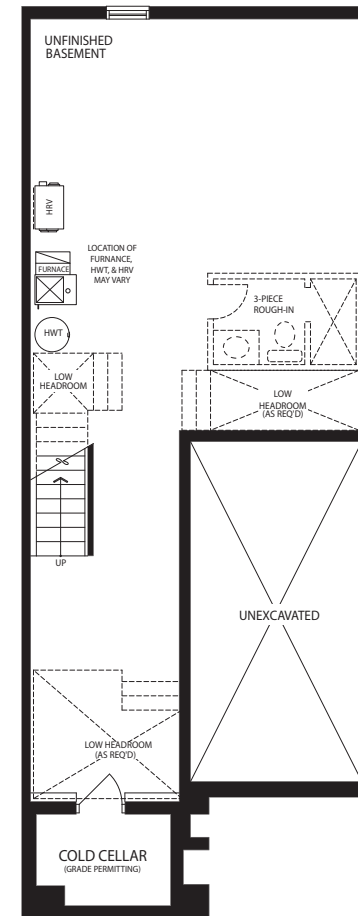
ELEVATION A & B
1,590 SQ. FT.



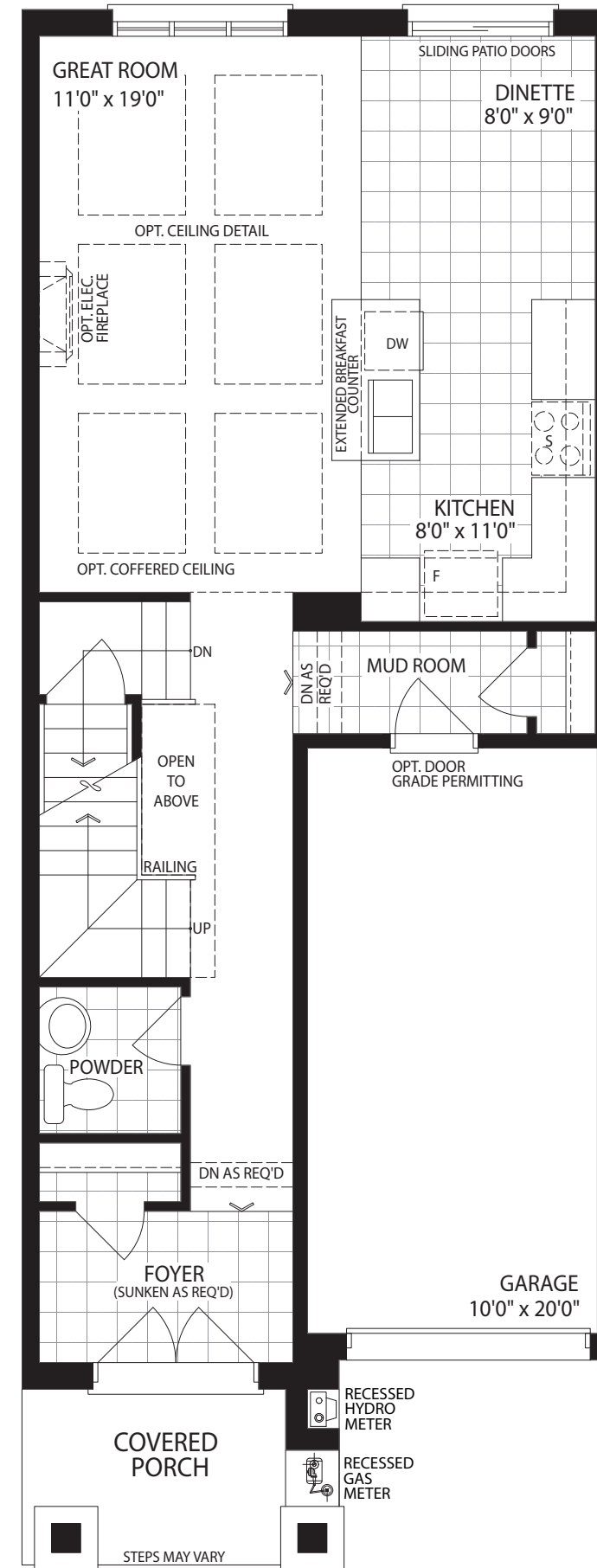
Elevation A Rev



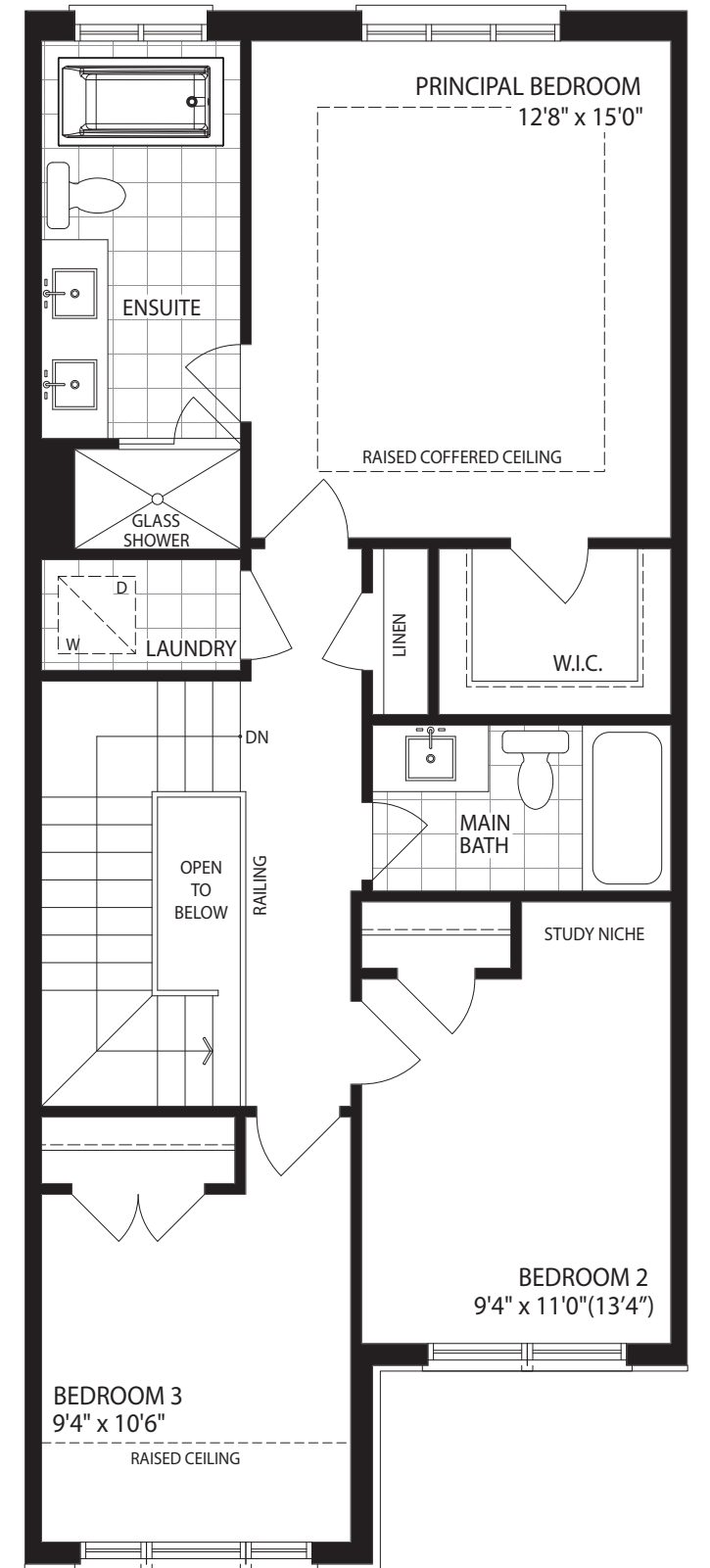
Elevation B



BASEMENT
ELEV. A



MAIN FLOOR
ELEV. A



SECOND FLOOR
ELEV. A

The floor plans and elevations shown are pre-construction plans and may be revised or improved as necessitated by architectural controls and the construction process. The measurements adhere to the rules and regulations of the TARIION Warranty Corporation's official method for the calculation of floor area. Actual usable floor space may vary from the stated floor area. Railings on front porch only where required by O.B.C. Locations of furnace, HRV, hot water tank, posts and beams may vary and are to be determined by Vendor and Architect. Purchasers shall be deemed to accept the same. All images and renderings are artist concept only and subject to change. E. & O. E. (2001)

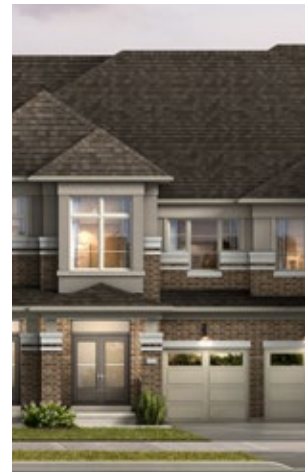


20'
FREEHOLD
TOWNS

THE FORESTBROOK

ELEVATION A **1,730 SQ. FT.**

ELEVATION B **1,725 SQ. FT.**



Elevation A



Elevation B



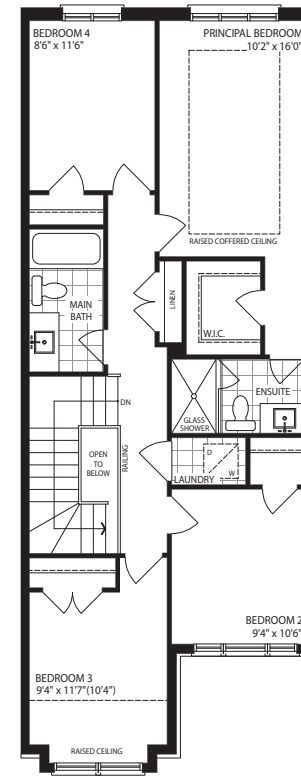
FORESTBROOK A

FORESTBROOK A

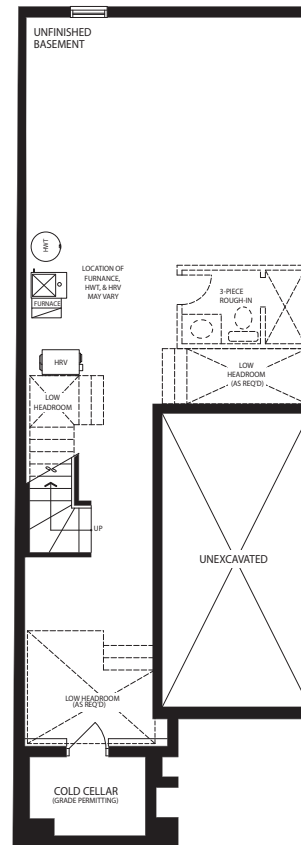


FORESTBROOK B

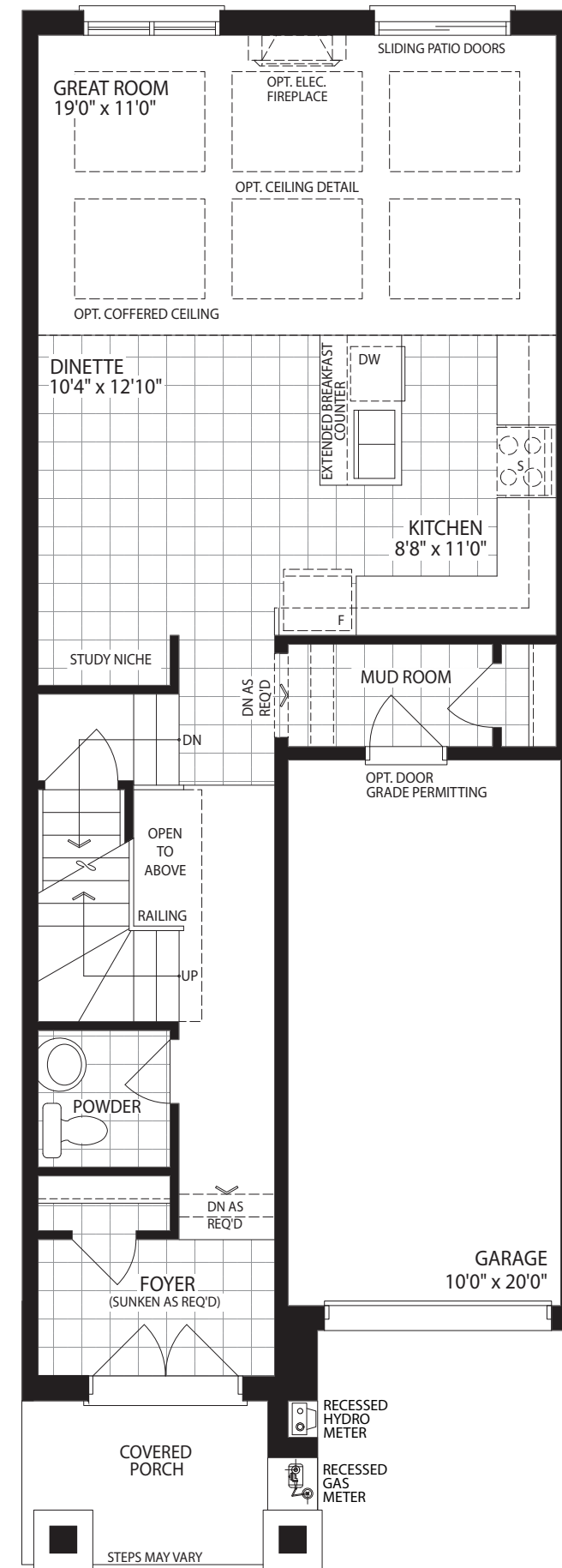
FORESTBROOK B REV



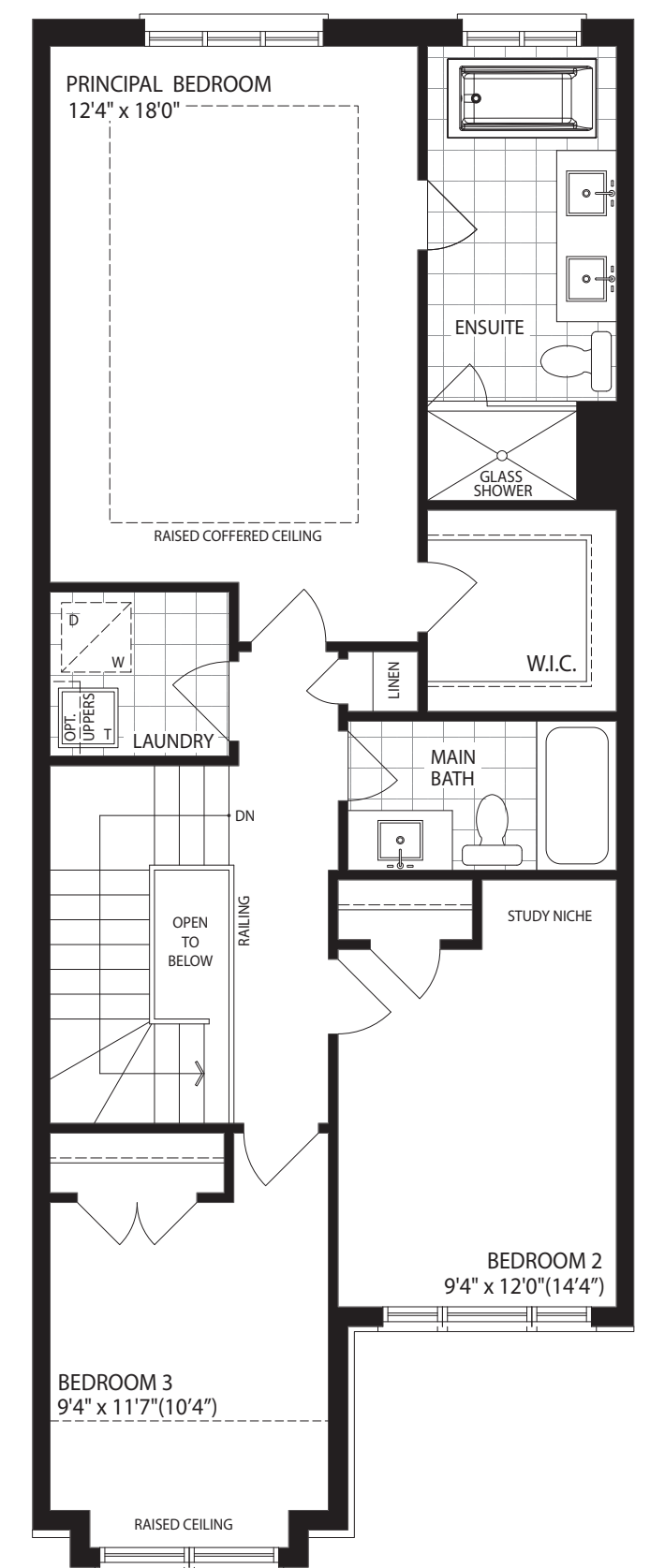
OPT. 4 BEDROOM
SECOND FLOOR
ELEV. A



BASEMENT
ELEV. A



MAIN FLOOR
ELEV. A



SECOND FLOOR
ELEV. A

The floor plans and elevations shown are pre-construction plans and may be revised or improved as necessitated by architectural controls and the construction process. The measurements adhere to the rules and regulations of the TARIION Warranty Corporation's official method for the calculation of floor area. Actual usable floor space may vary from the stated floor area. Railings on front porch only where required by O.B.C. Locations of furnace, HRV, hot water tank, posts and beams may vary and are to be determined by Vendor and Architect. Purchasers shall be deemed to accept the same. All images and renderings are artist concept only and subject to change. E. & O. E. (2022)



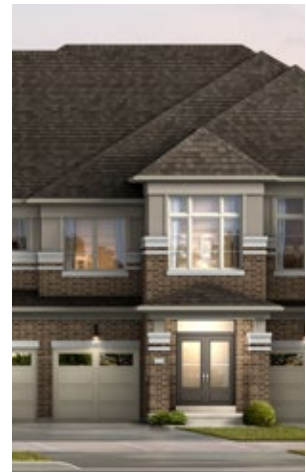
20'
FREEHOLD
TOWNS



THE ROSEBANK

ELEVATION A **1,820 SQ. FT.**

ELEVATION B **1,830 SQ. FT.**



Elevation A REV



Elevation B

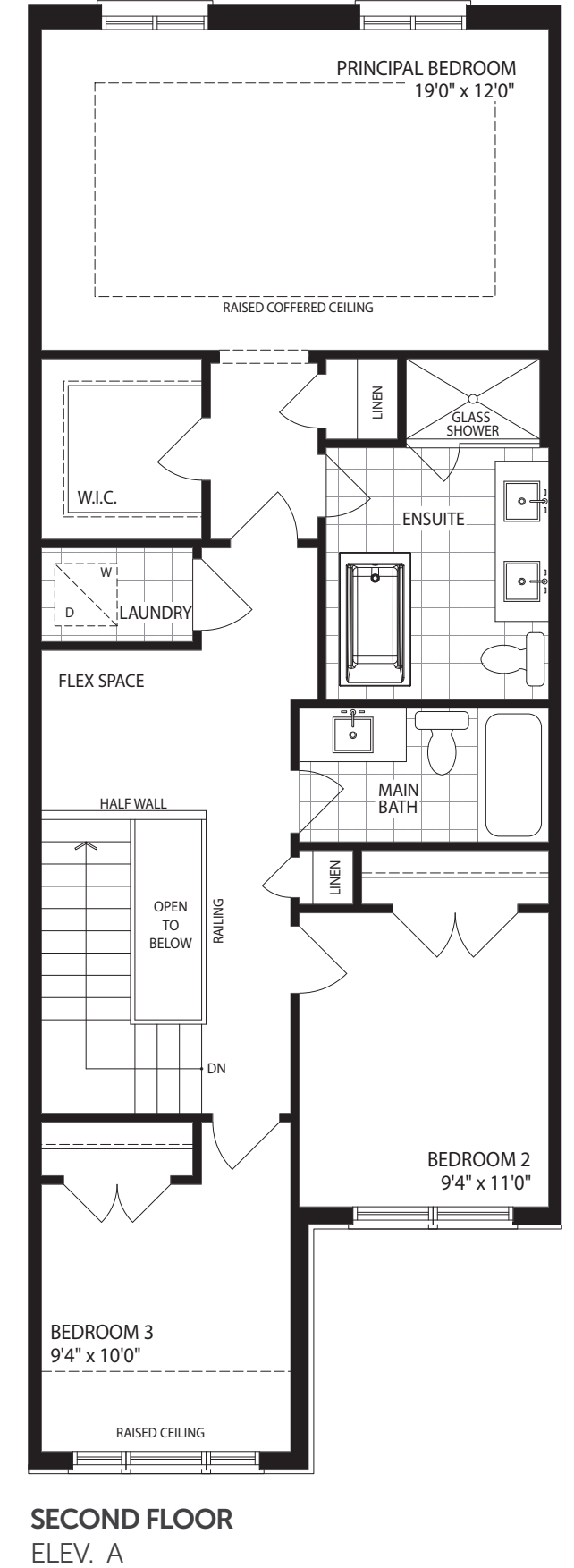
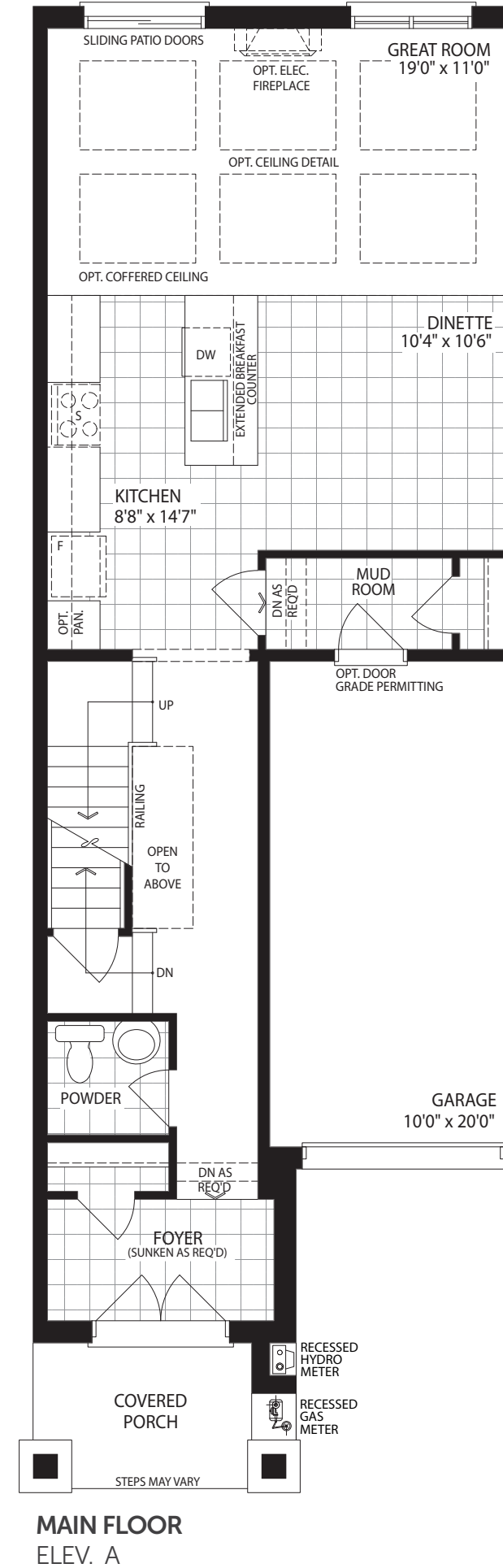
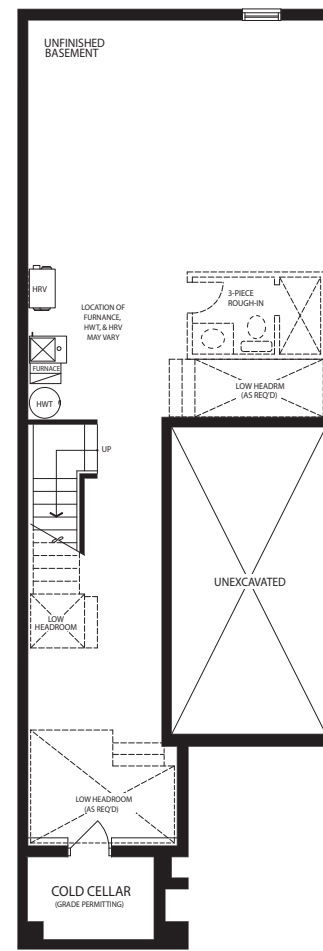
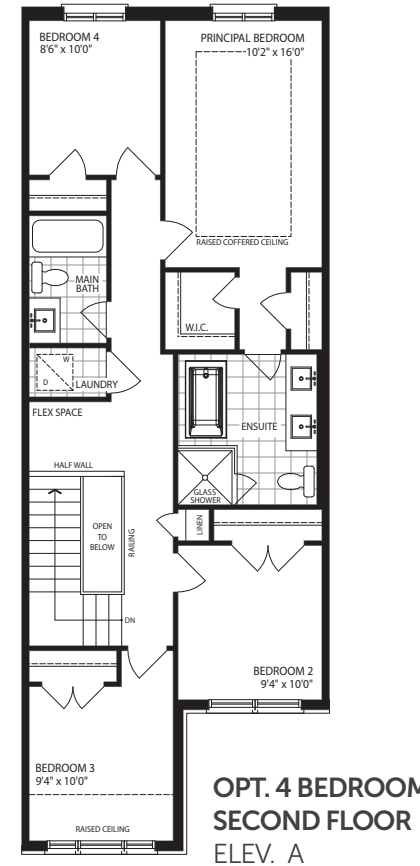


ROSEBANK A REV

ROSEBANK A REV



ROSEBANK B REV ROSEBANK B



The floor plans and elevations shown are pre-construction plans and may be revised or improved as necessitated by architectural controls and the construction process. The measurements adhere to the rules and regulations of the TARIION Warranty Corporation's official method for the calculation of floor area. Actual usable floor space may vary from the stated floor area. Railings on front porch only where required by O.B.C. Locations of furnace, HRV, hot water tank, posts and beams may vary and are to be determined by Vendor and Architect. Purchasers shall be deemed to accept the same. All images and renderings are artist concept only and subject to change. E. & O. E. (2003)



20'
FREEHOLD
TOWNS

THE ALDERWOOD

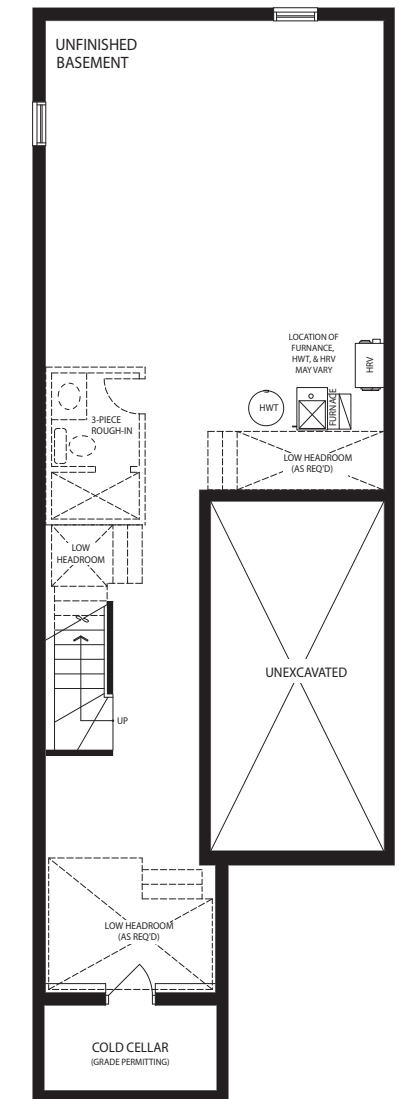
ELEVATION A & B
1,970 SQ. FT.



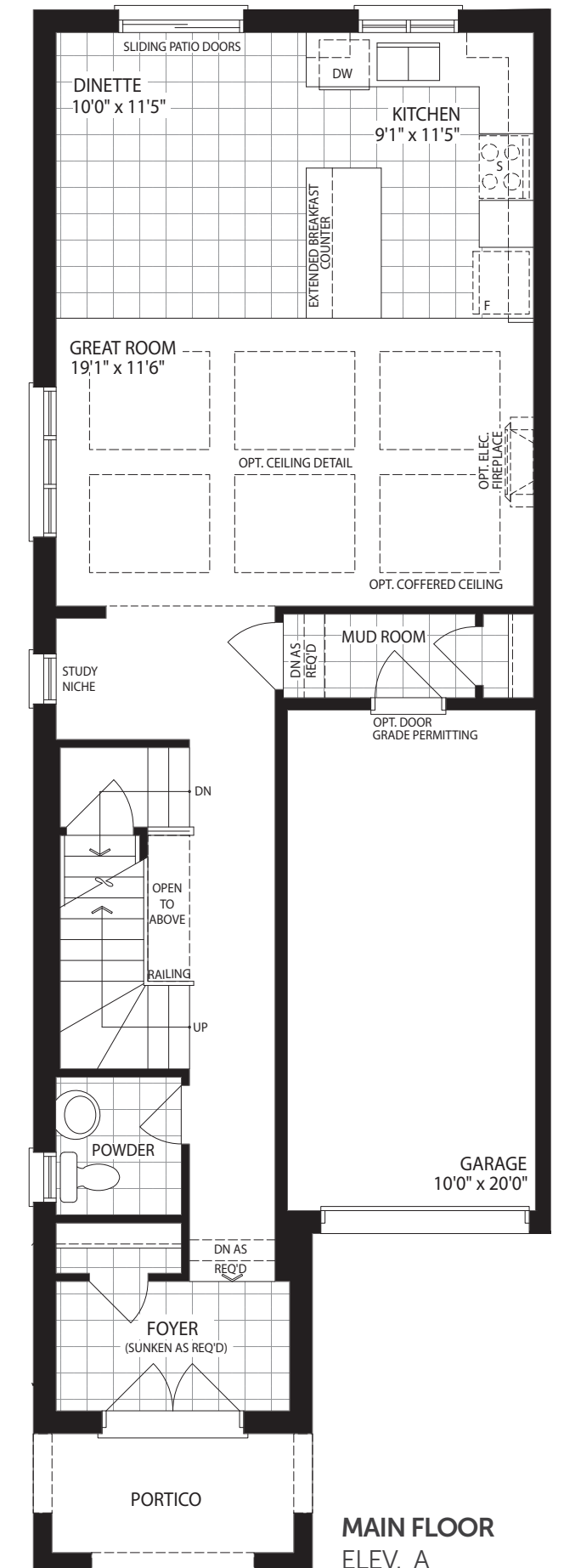
Elevation A END



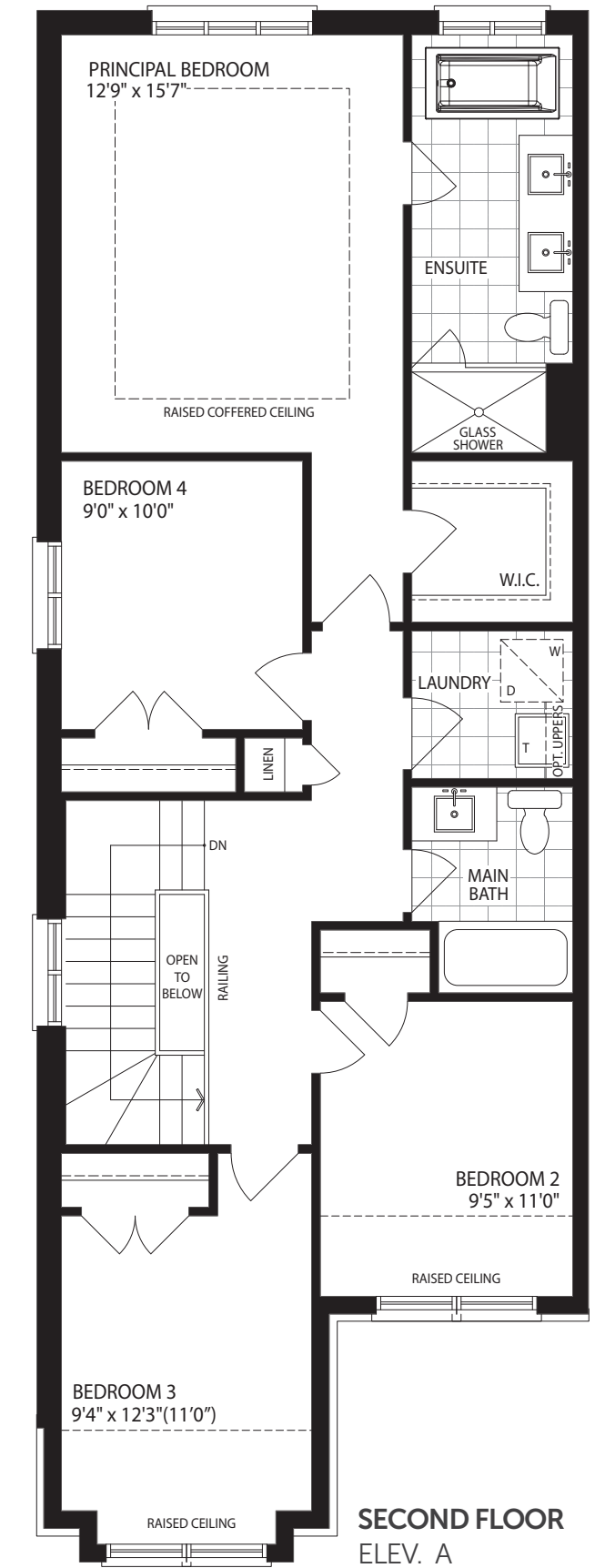
Elevation B END



BASEMENT
ELEV. A



MAIN FLOOR
ELEV. A



SECOND FLOOR
ELEV. A

The floor plans and elevations shown are pre-construction plans and may be revised or improved as necessitated by architectural controls and the construction process. The measurements adhere to the rules and regulations of the TARION Warranty Corporation's official method for the calculation of floor area. Actual usable floor space may vary from the stated floor area. Railings on front porch only where required by O.B.C. Locations of furnace, HRV, hot water tank, posts and beams may vary and are to be determined by Vendor and Architect. Purchasers shall be deemed to accept the same. All images and renderings are artist concept only and subject to change. E. & O. E. (2004)

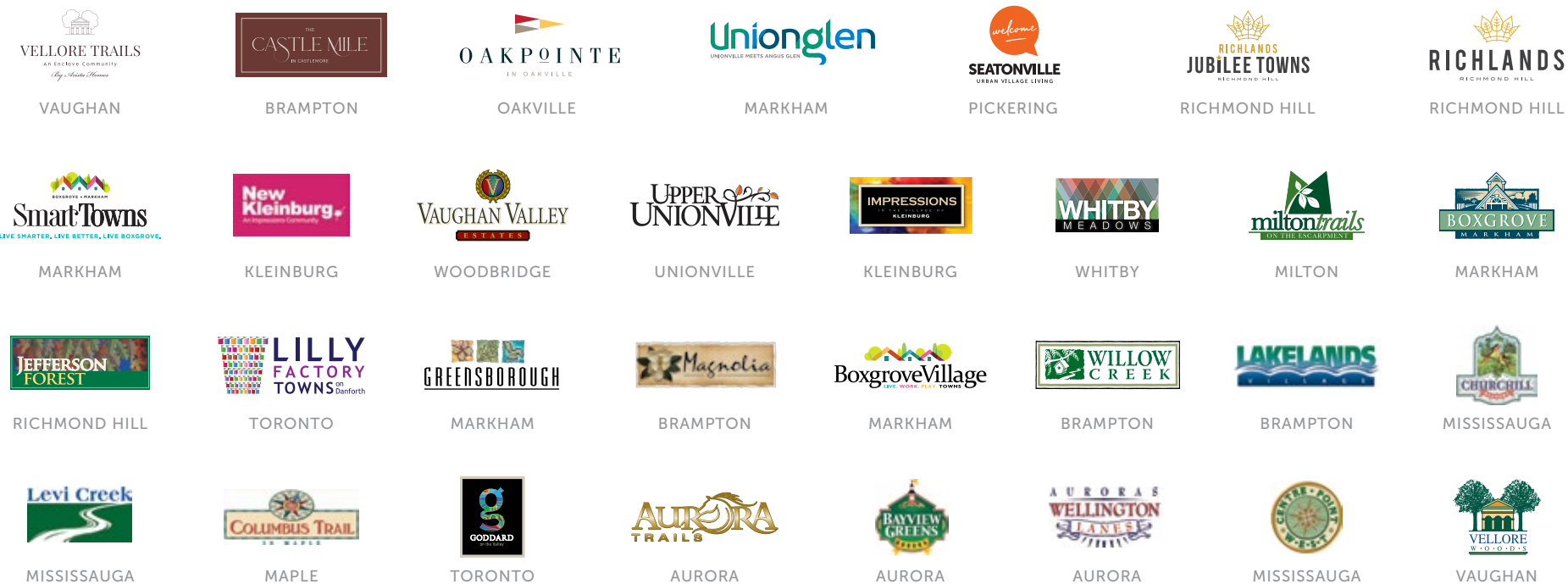




The ARISTA "A" TEAM has been building Award-Winning New Home Communities across the GTA and Southern Ontario since 1994

Complementing the many communities **ARISTA HOMES** has successfully completed since its beginning, **ARISTA HOMES** is hard at work building a number of new award-winning neighbourhoods, each with homes that feature the exceptional design and construction for which **ARISTA HOMES** is renowned.

SOME OF OUR PAST, CURRENT AND UPCOMING COMMUNITIES:



SEATON
welcome
VILLE URBAN
VILLAGE
LIVING

 **ARISTA**
H O M E S

ARISTAHOMES.COM